

7 U H Q F K % D U U L H U 6 F K R W W N \ 5 H F W

**Features**

- Advanced trench technology
- Low forward voltage drop
- Low power losses
- High efficiency operation
- Lead Free Finish, RoHS Compliant

**Applications**

- DC/DC Converters
- AC/DC Adaptors
- Switching Power Supplies
- Freewheeling Diodes

**Maximum ratings and electrical characteristics (TJ = 25°C unless otherwise noted)**

Parameter	Symbol	Limit	Unit
Maximum repetitive peak reverse voltage	VRRM		V
Maximum average forward rectified current	IF(AV)		A
Peak forward surge current 8.3 ms single half sine- wave superimposed on rated load per diode	IFSM		A
Operating junction and storage temperature range	TJ, TSTG	- to +150	

7 \ S L F D O W K H U P D O U H V L V W D Q F H S H U G L S G 1 0 R X Q W H G R Q ) 5 3 & C A W

Notes:

3 X O V H W H V W 3 X O V H Z L G W K G X W \ F \ F O H  
 3 X O V H W H V W 3 X O P W H Z L G W K 0

**RATINGS AND CHARACTERISTICS CURVES (TA = 25 °C unless otherwise noted)**

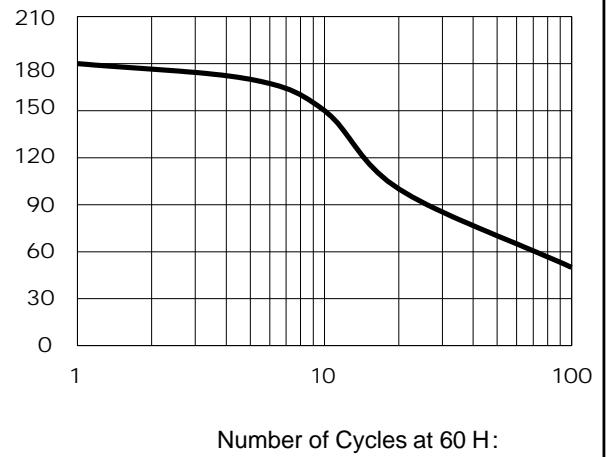
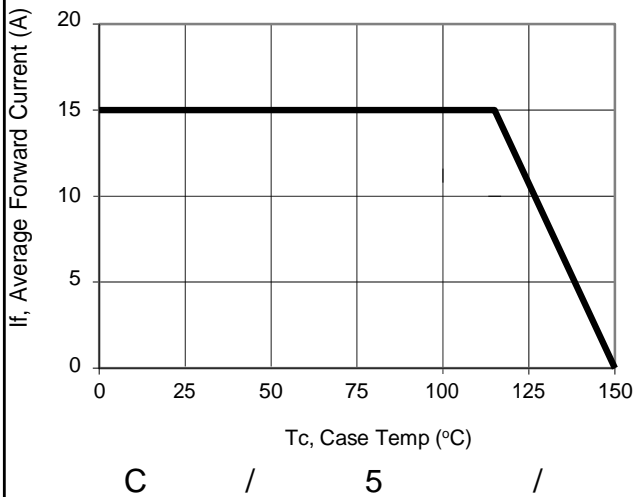
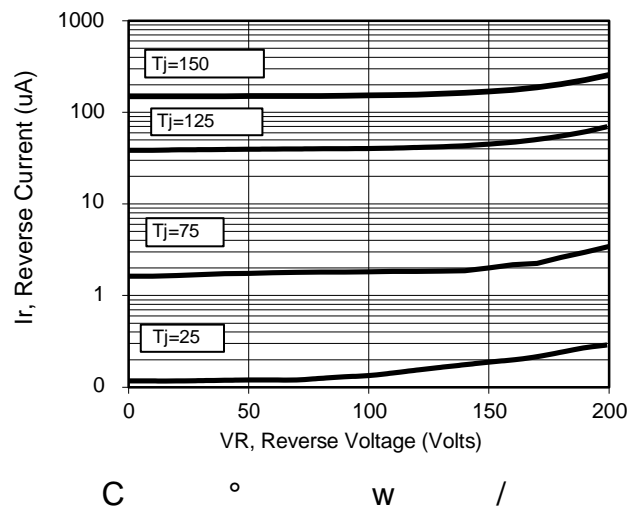
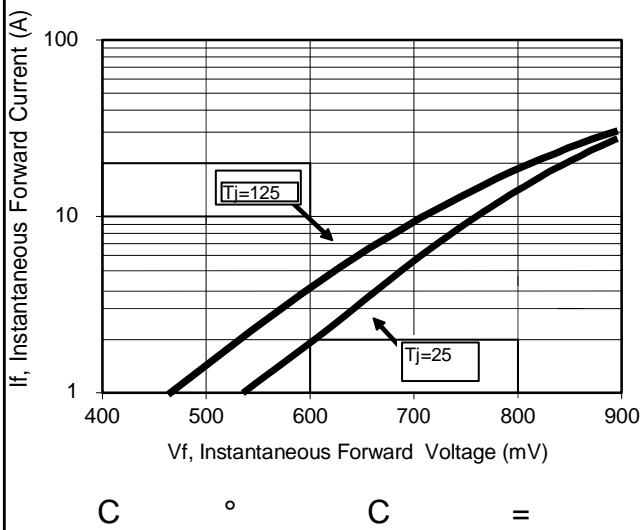
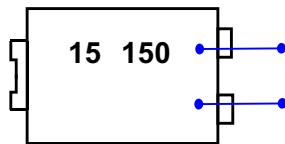


Figure2: Maximum Repetitive Surge Current





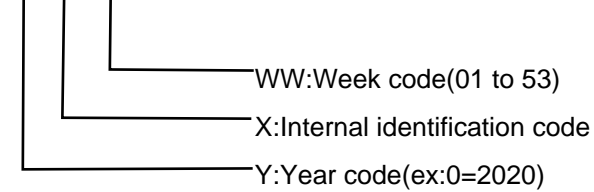
## Marking Information



7 Product model :TSPFÍÛFÍ€SP Referred to as FÍÛFÍ€

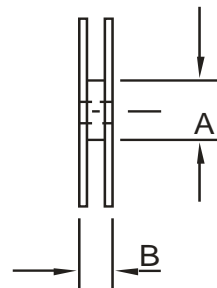
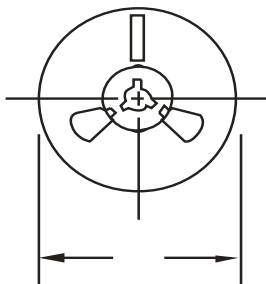
8 PDC information

Y X WW

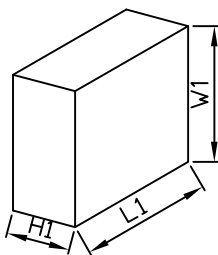


## Packaging Information

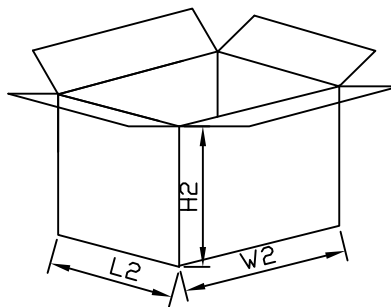
1.Reel Dimensions



2.Inside Box



3.Outside Box



## Packaging Information

NO	UNIT	Reel Dimensions			Inside Box			Outside Box		
			A	B	L1	W1	H1	L2	W2	H2
Size	mm	330	70	15	335	335	43	360	360	360
QTY	PCS	Smallest package,5000PCS/reel			10,000PCS,2 reel in total			80,000PCS/carton,8 boxes in total		
Note	Tolerance 20mm,±3mm; 21-100mm,±5mm; 101-500mm,±10mm									