

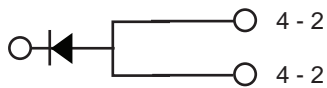
$d \wedge W \dot{i} \dot{> i} \dot{r} \dot{\wedge}$
!"

Features

ï

1

Applications



Maximum ratings and electrical characteristics (T_J = 25°C unless otherwise noted)

			R _{θJC}	

(1) Pulse test: 300 μs pulse width, 1 % duty cycle

(2) Pulse test: Pulse width 0.40 ms

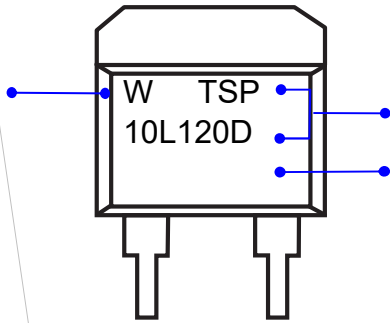
RATINGS AND CHARACTERISTICS CURVES (TA = 25 °C unless otherwise noted)

Percent of Rated Peak Reverse Voltage (%)

PACKAGE OUTLINE DIMENSIONS

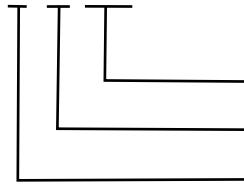
Note:unit In(mm)

0DUNLQJ ,QIRUPDWLRQ

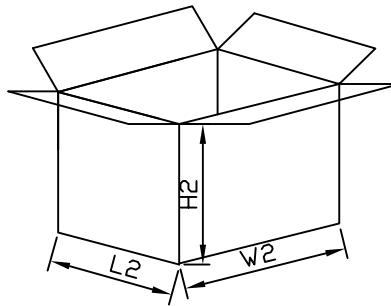
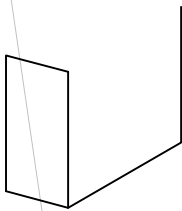
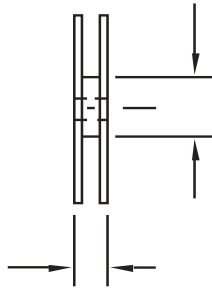
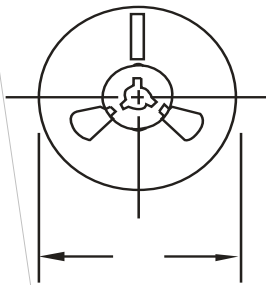


7
8
9

TSP10L120D For TSP10L120D-S



3DFNDJLQJ ,QIRUPDWLRQ



3DFNDJLQJ ,QIRUPDWLRQ